



RAJESWARI COLLEGE OF ARTS AND SCIENCE FOR WOMEN

BOMMAYAPALAYAM VILLAGE & POST, VANUR TALUK, VILLUPURAM - 605104

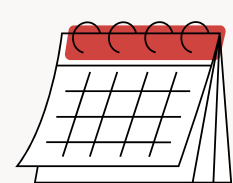
Association with

SKRGC ACADEMY

Organized by

DEPARTMENT OF COMPUTER SCIENCE

INTERNATIONAL CONFERENCE ON ADVANCED INTELLIGENCE AND EMERGING TECHNOLOGIES (ICAIAET 2025)



Date: 8 -10 October, 2025



Time: 10:00 Onwards



Venue : Hybrid

Registration last date - 29 september, 2025

Paper submission last date - 03 october, 2025

REGISTER NOW

www.rajeswaricollege.com

rajeswaricollege@yahoo.in

About

About the College

Rajeswari College of Arts & Science for Women, established in 2007 by the Kumaraswamy Educational Trust, is affiliated to Annamalai University, Chidambaram. Located in a serene campus at Bommayapalayam, Vanur Taluk, Villupuram District, Tamil Nadu, the college is dedicated to empowering women through quality higher education.

The institution offers undergraduate and postgraduate programs in Arts, Science, Commerce, Management, and Computer Applications. With well-qualified faculty, modern infrastructure, and a vibrant academic environment, the college nurtures intellectual growth, ethical values, and professional skills among students.

Guided by its vision to build confidence and holistic development in young women, the college emphasizes academic excellence, research, cultural enrichment, and industry readiness. A strong placement cell, state-of-the-art facilities, and active student engagement ensure that learners are well-prepared to meet global challenges while contributing meaningfully to society.

About the Academy

SKRGC Academy, a proud initiative of the SK Research Group of Companies, is a center of excellence committed to advancing education, research, and professional development. Established with the vision of bridging the gap between academia and industry, the academy provides a vibrant platform for students, researchers, and faculty to expand their knowledge and skills.

The Academy organizes national and international conferences, faculty development programs, workshops, internships, training sessions, and journal publications, ensuring holistic growth and exposure to global standards. By fostering innovation, collaboration, and leadership, SKRGC Academy empowers learners to achieve academic excellence while preparing them to face real-world challenges with confidence.

With its strong focus on quality, creativity, and continuous improvement, SKRGC Academy stands as a trusted destination for knowledge seekers and professionals aspiring to make a meaningful impact in their chosen fields.

REGISTER NOW

ICAIAET 2025

About the Conference

The International Conference on Advanced Intelligence and Emerging Technologies (ICAIAET 2025) provides a global platform for students, researchers, academicians, and industry professionals to exchange knowledge, present innovative ideas, and discuss emerging trends across disciplines. The conference aims to foster collaboration between academia and industry, encouraging interdisciplinary research and technological advancements that address real-world challenges.

ICAIAET 2025 embraces diverse domains, including Arts, Science, Engineering, Medical Sciences, Cultural Studies, Social Sciences, and Linguistics, offering participants a unique opportunity to showcase their work and gain exposure to global perspectives. With its hybrid mode, the conference ensures accessibility for international participants while maintaining the rigor of academic engagement.

Through paper presentations, discussions, and knowledge-sharing sessions, ICAIAET 2025 strives to advance education, research, and innovation, while nurturing a community dedicated to shaping the future of intelligence and emerging technologies



COMMITTEE

Chief Patron

Mr. S. Sivakumar

Secretary,
Rajeswari College of Arts & Science for Women,
Affiliated to Annamalai University,
Villupuram, Tamil Nadu, India.

Patron

Dr. B. Booma Devi

Principal,
Rajeswari College of Arts & Science for Women,
Affiliated to Annamalai University,
Villupuram, Tamil Nadu, India.

Convener & Organizing Secretary

Dr. A. Saranya

Assistant Professor,
Department of BCA,
Rajeswari College of Arts & Science for Women,
Affiliated to Annamalai University,
Villupuram, Tamil Nadu, India.

Conference Organizing Secretaries

Ms. K. Rathi Devi

Assistant Professor & Head,
Department of Computer Science,
Rajeswari College of Arts & Science for Women,
Affiliated to Annamalai University,
Villupuram, Tamil Nadu, India.

Prof. S. Priyanga

Assistant Professor & Head,
Department of BCA
Rajeswari College of Arts & Science for Women,
Affiliated to Annamalai University,
Villupuram, Tamil Nadu, India.

Organizing Committee

Prof. R. Jayaprabha

Assistant Professor ,
Department of Computer Science,
Rajeswari College of Arts & Science for Women,
Affiliated to Annamalai University,
Villupuram, Tamil Nadu, India.

Prof. B. Sivaranjani,

Assistant Professor,
Department of Computer Science,
Rajeswari College of Arts & Science for Women,
Affiliated to Annamalai University,
Villupuram, Tamil Nadu, India.

Prof. S.Thamzhilakkiya

Assistant Professor,
Department of BCA
Rajeswari College of Arts & Science for Women,
Affiliated to Annamalai University,
Villupuram, Tamil Nadu, India.

Prof. S. Shylaja

Assistant Professor,
Department of Computer Science,
Rajeswari College of Arts & Science for Women,
Affiliated to Annamalai University,
Villupuram, Tamil Nadu, India.

Prof. S. Seventhi

Assistant Professor,
Department of Computer Science,
Rajeswari College of Arts & Science for Women,
Affiliated to Annamalai University,
Villupuram, Tamil Nadu, India.

Conference Student Co-ordinators

S. Sucithra

Student M.Sc ,
Department of Computer Science,
Rajeswari College of Arts & Science for Women,
Affiliated to Annamalai University,
Villupuram, Tamil Nadu, India.

S. Nargees Banu

Student M.Sc ,
Department of Computer Science,
Rajeswari College of Arts & Science for Women,
Affiliated to Annamalai University,
Villupuram, Tamil Nadu, India.

Nowshat Banu S.

Student B.Sc ,
Department of Computer Science,
Rajeswari College of Arts & Science for Women,
Affiliated to Annamalai University,
Villupuram, Tamil Nadu, India.

Almas Banu T.

Student B.Sc ,
Department of Computer Science,
Rajeswari College of Arts & Science for Women,
Affiliated to Annamalai University,
Villupuram, Tamil Nadu, India.

Kumaravalli S.

Student BCA,
Department of BCA,
Rajeswari College of Arts & Science for Women,
Affiliated to Annamalai University,
Villupuram, Tamil Nadu, India.

Dharshini V.

Student BCA,
Department of BCA,
Rajeswari College of Arts & Science for Women,
Affiliated to Annamalai University,
Villupuram, Tamil Nadu, India.

THEMES

Arts

Focuses on creative expression, performance and visual representation

- Fine Arts: Painting, Sculpture, Drawing, Digital Art.
- Performing Arts: Dance, Theatre, Music, Film, and Media.
- Literary Arts: Poetry, Prose, Fiction, Creative Writing.
- Art History: Evolution of Art Movements, Renaissance Art, Contemporary Art.
- Design and Aesthetics: Architecture, Graphic Design, Fashion Design. Multimedia Arts: Animation, Video Production and Virtual Reality in Art.

Science

Explores the natural world through observation, experimentation and analysis

- Physical Sciences: Physics (Quantum Mechanics, Astrophysics), Chemistry (Nanotechnology, Organic Synthesis) Earth Sciences.
- Life Sciences: Genetics, Microbiology, Biotechnology, Ecology
- Environmental Science: Climate Change, Biodiversity Conservation, Renewable Energy.
- Mathematics: Data Analytics, Cryptography, Computational Methods.
- Astronomy: Space Exploration, Exoplanetary Studies, Cosmology.

Engineering

Involves the application of scientific principles to solve real-world problems

- Civil Engineering: Sustainable Infrastructure, Smart Cities, Geotechnical Innovations.
- Mechanical Engineering: Robotics, Automotive Engineering, Thermodynamics.
- Electrical and Electronics Engineering: Internet of Things (IoT), Renewable Energy Systems, AI in Circuit Design.
- Computer Science Engineering: Machine Learning, Blockchain, Cybersecurity.
- Aerospace Engineering: Drone Technologies, Spacecraft Design. Biomedical Engineering: Medical Devices, Prosthetics, Biomechanics.

ICAI AET 2025

Medical Sciences

Addresses health and the human body, emphasizing research, diagnosis and treatment

- Clinical Research: Drug Development, Vaccine Trials.
- Surgical Innovations: Robotics in Surgery, Minimally Invasive Techniques.
- Public Health: Epidemiology, Disease Prevention, Global Health Challenges.
- Medical Imaging: MRI, CT Scans, AI in Diagnostics. Biomedical Research: Stem Cell Therapy, Gene Editing.
- Mental Health: Neuroscience, Psychological Therapies, Psychiatry.

Cultural Studies

Examines the traditions, beliefs and practices of various societies

- Anthropology: Cultural Evolution, Indigenous Practices.
- Heritage and Conservation: UNESCO World Heritage Sites, Museum Studies
- Intercultural Communication: Globalization and Cultural Identity.
- Folklore and Mythology: Storytelling Traditions, Comparative Mythology.
- Festivals and Rituals: Social Significance of Celebrations.

Linguistics and Languages

Explores human communication, its structure and its evolution

- Sociolinguistics: Language and Society, Dialects, Code-Switching.
- Language Learning and Pedagogy: ESL/EFL Methods, Multilingual Education.
- Translation Studies: Literary Translation, Machine Translation.
- Endangered Languages: Language Documentation, Revival Programs.

Social Sciences

Studies human behavior, societies and interactions

- Economics: Behavioral Economics, Global Trade, Economic Policies.
- Sociology: Social Inequalities, Urban Development, Gender Studies.
- Political Science: International Relations, Public Administration, Governance.
- Psychology: Cognitive Science, Developmental Psychology.
- Education: Curriculum Development, Inclusive Education, EdTech.
- History: Historical Narratives, Archaeology, Global Events.

REGISTRATION FEES

Category	In Person conference	
PG Students	Rs.300/-	
UG Students		
Research Scholars	500/-	
Faculty		
Industry Person		
Proceeding: Rs.500/- Extra Charges		
Certificate	Softcopy	Hardcopy (Synthetic Card)
Proceedings	Softcopy	Hardcopy (Extra Charges)

BANK DETAILS

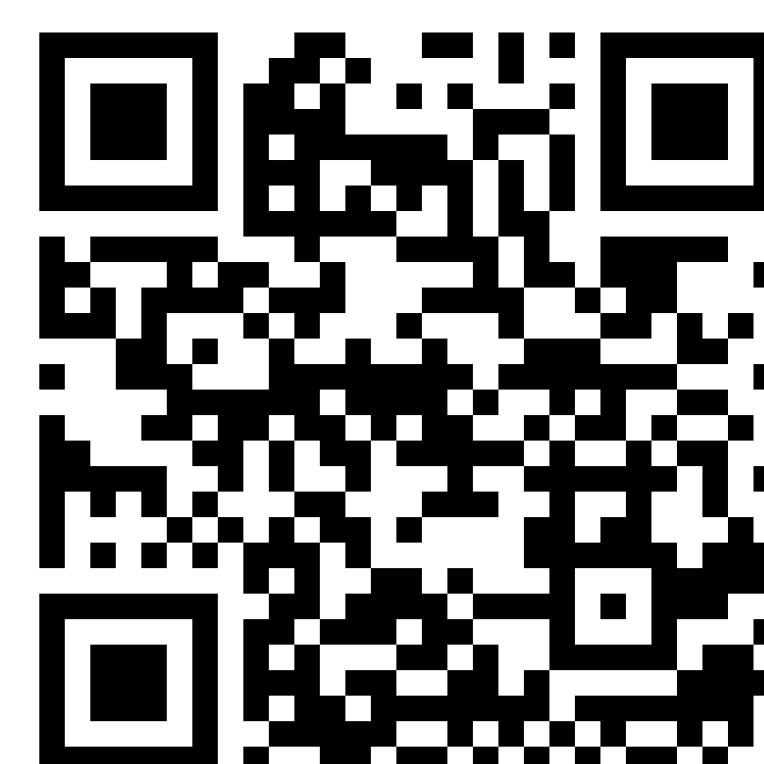
Name: SK Research Group of Companies
Account Number: 120002411355
IFSC Code: CNRB0004014
Branch: Nilayur, Madurai, Tamil Nadu, India
Gpay – 94895 58237 (SKRGC Academy)

Contact Person
Mrs. T.Saranya Devi
Project Manager (R & D), SKRGC Academy
Phone: +91 94895 58237
Email: skrgcacademy@gmail.com



UPI ID: skrgcacademy@okicici

APPLY NOW



REGISTER NOW